



LaserPXle-1201

LaserPXle 1200 Series

DFB Laser Source

SPEC SHEET

The LaserPXle 1200 Series is a highly customizable DFB laser source available in a wide range of wavelengths and powers.

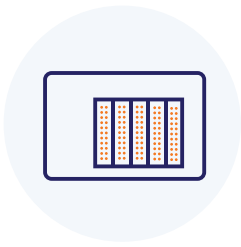
Its modular design allows for seamless integration with the PXI platform and it can be used seamlessly in test setups with hundreds of other PXI modules.



coherent
solutions

complexity made simple.

Features



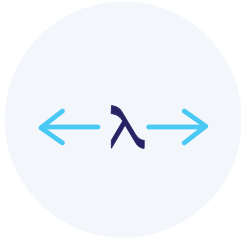
1, 2 or 4 lasers per single-slot module

Achieve high channel density with up to 68 channels in an 18-slot PXI chassis.



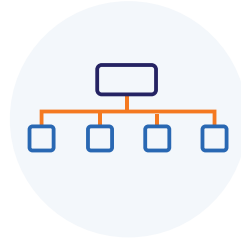
Superior power accuracy

Advanced calibration for flat power response, ideal for applications including coherent / Orthogonal Frequency-Division Multiplexing (OFDM) transmission and WDM networks.



Wide range of wavelengths and power options

Customize the LaserPXIe with different wavelengths and/or power options to meet your specific requirements.



Seamless PXI integration

Take advantage of PXI's integrated triggering and synchronization capabilities across electrical and optical instruments for a true mixed-signal test platform.

Target Applications

- General purpose stable light source for telecom and physics
- WDM network loading
- Amplifier testing
- CWDM reference light source

The world-leader in PXI optical test & measurement

Our portfolio of PXI optical test modules is rapidly expanding to meet a wide range of customer requirements and applications.

Our experience designing and building advanced coherent optical communications instruments gives us the expertise to quickly and cost-effectively customize our products to meet your requirements. If you don't see what you need, contact us today at sales@coherent-solutions.com.



LaserPXIe Versatile Laser Source

Versatile range of laser sources including fully-tunable C and/or L band or fixed wavelength.



PowerPXIe Optical Power Meter

Large-area detector power meter available in various specifications. Options include external trigger input and analog output.



VOAPXIe Variable Optical Attenuator

Operates in fixed attenuation or constant output power modes. Integrated power meter for precise output power control.



OSAPXIe Optical Spectrum Analyzer

Fast spectral test and measurement in a compact 2-slot module. O, C and L band options.



O2EPXIe Optical-to-Electrical Converter

High bandwidth, broadband O-to-E converter. AC or DC coupling, various conversion gain and operating wavelength range.



SwitchPXIe Automated Optical Switch

Proven reliability and fast switching time. Various wavelength options including 850 nm, 980 nm, 1310 nm & 1550 nm.



PassivePXIe Passive component integration

Integrate passive optical components of your choice in a single or dual slot module. WDM couplers, splitters, band-pass filters, PM beamsplitters, circulators and more.



DopplerPXIe Photonic Doppler Velocimeter

Purpose-built module for Photonic Doppler Velocimetry. A circulator, two VOAs and a passive coupler all built into one compact module.



TrayPXIe Passive Component Organizer

Protect your passive fiber optic components to keep your workspace tidy & safe.



The perfect PXI chassis to suit your application

From a smaller 4-slot to the 18-slot rack mountable chassis, we can provide the perfect National Instruments PXIe chassis to suit your application.



Technical Specifications - Preliminary

General Specifications	LaserPXle 1200 Series
Bus connection	PXle
Optical connector type	FC/PC, FC/APC, SC/PC, SC/APC
Number of channels	1, 2 or 4
Slot count	1207,1208, 1209: 1 slot 1201, 1202, 1203, 1204, 1205: 2 slots
Dimensions (HxWxD)	130 mm x 20mm x 215 mm (5.1" x 0.8" x 8.5") 130 mm x 40mm x 215 mm (5.1" x 1.6" x 8.5")
Weight	~ 1 kg ~ 2.2 lbs
Operating temperature range	5 °C to 45 °C 41 °F to 113 °F
Storage temperature range	-40 °C to 70 °C -40 °F to 158 °F

Model Number	1201	1202	1203	1204
Fiber type	SMF 28	SMF 28	SMF 28	900 nm: PM 850 650 nm: MMF OM3
Number of channels	4	1, 2 or 4	4	2
Operating wavelengths (nm)	1271, 1291, 1311, 1331	1310	1351, 1371, 1391, 1411	655, 895
Wavelength accuracy	±3 nm (Typical) ±5 nm (Max)			± 5 nm (Typical) ±10 nm (Max)
Linewidth	0.2 nm / 36 GHz		0.32 nm / 50 GHz	900 nm: 2.7 fm / 1 MHz 650 nm: 3 nm / 2.1 THz
Maximum optical output power	7 dBm			10 dBm
Side Mode Suppression Ratio	30 dB			900 nm: 30 dB

Model Number	1205	1207	1208	1209
Fiber type	SMF 28	PM1310	SMF 28	SMF 28
Number of channels	2	1, 2 or 4	1, 2 or 4	1, 2 or 4
Operating wavelengths (nm)	980, 1060, 1310, 1550	1310	1550	
Wavelength accuracy	± 5 nm (Typical) ±10 nm (Max)	±3 nm (Typical) ±5 nm (Max)		
Linewidth	TBC	0.3 nm / 52 GHz	1 MHz (Typical)	
Maximum optical output power	980 nm: 10 dBm 1060 nm: 10 dBm 1310 nm: 7 dBm 1550 nm: 7 dBm	14.5 dBm	10 dBm	13 dBm
Side Mode Suppression Ratio	900 nm: 30 dB	30 dB (Min) 50 dB (Typical)		

PRELIMINARY SPECS AS OF JUNE 2019

Highly Customizable Laser Sources

LaserPXle 1200 Series can be customized with a wide selection of wavelengths and power options. A collection of the most popular models are listed in this spec sheet. If you don't see a model that meets your requirements, please contact us.



Ordering Information

LaserPXIe - XXXX - X - XX

Model number

1201 = 1271, 1291, 1311, 1331 nm; 7 dBm
1202 = 1310 nm; 7 dBm
1203 = 1351, 1371, 1391, 1411 nm; 7 dBm
1204 = 895, 655 nm; 10 dBm
1205 = 980, 1060, 1310, 1550 nm; 7, 10 dBm
1207 = 1310 nm; 14.5 dBm
1208 = 1550 nm; 10 dBm
1209 = 1550 nm, 13 dBm

Connector type

FC = FC/PC
FA = FC/APC
SC = SC/PC
SA = SC/APC

Number of channels

1 = 1 Channel
2 = 2 Channels
4 = 4 Channels

About Coherent Solutions

Coherent Solutions is the world-leader in PXI optical test and measurement. Our portfolio of PXI optical test modules is rapidly expanding to meet the needs of engineers and scientists around the globe. From enabling pioneering experiments to driving highly-efficient production testing, you'll find us working with customers to solve complex problems with simple and intuitive solutions.

To find out more, get in touch with us today.

Coherent Solutions Ltd

General enquiries: sales@coherent-solutions.com
Technical support: support@coherent-solutions.com
Telephone: +64 9 478 4849
North America: +1-800-803-8872

www.coherent-solutions.com

 www.linkedin.com/company/coherent-solutions-ltd

 www.facebook.com/CoherentSolutionsLtd

 www.youtube.com/CoherentSolutionsLtd